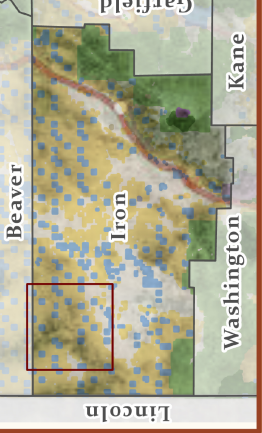
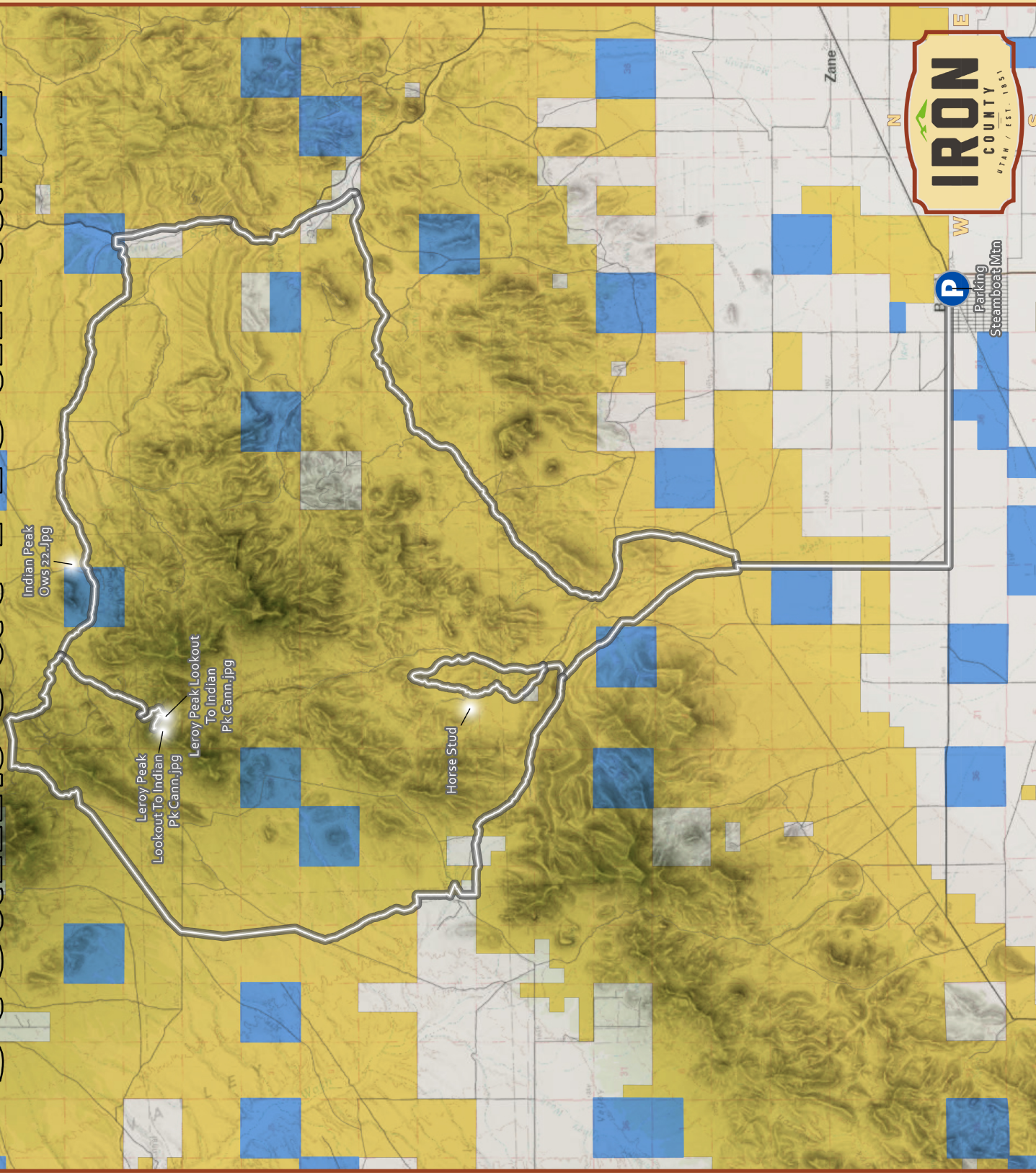


Steamboat Mountain



Horse Stud Rice Mountain



Sponsors



Parking: Beryl Trail Head
 Trip: 72 Miles of Inter./Novice trails
 Scenic: - Bob LeRoy Peak, Wild Horses, Old Mining Activity, Trophy Elk Area
 Approx. Time: 6 hrs
 Lunch: Arrowhead Pass

- Parking -113.6612905
37.8953712
- Trail Route
- Bureau of Land Management
- National Recreation Area
- National Parks & Historic Sites
- National Monument
- National Forest
- National Wilderness Area
- Private
- State Trust Lands
- State Parks and Recreation
- State Wildlife Reserve/Management Area
- Tribal Lands
- Roads